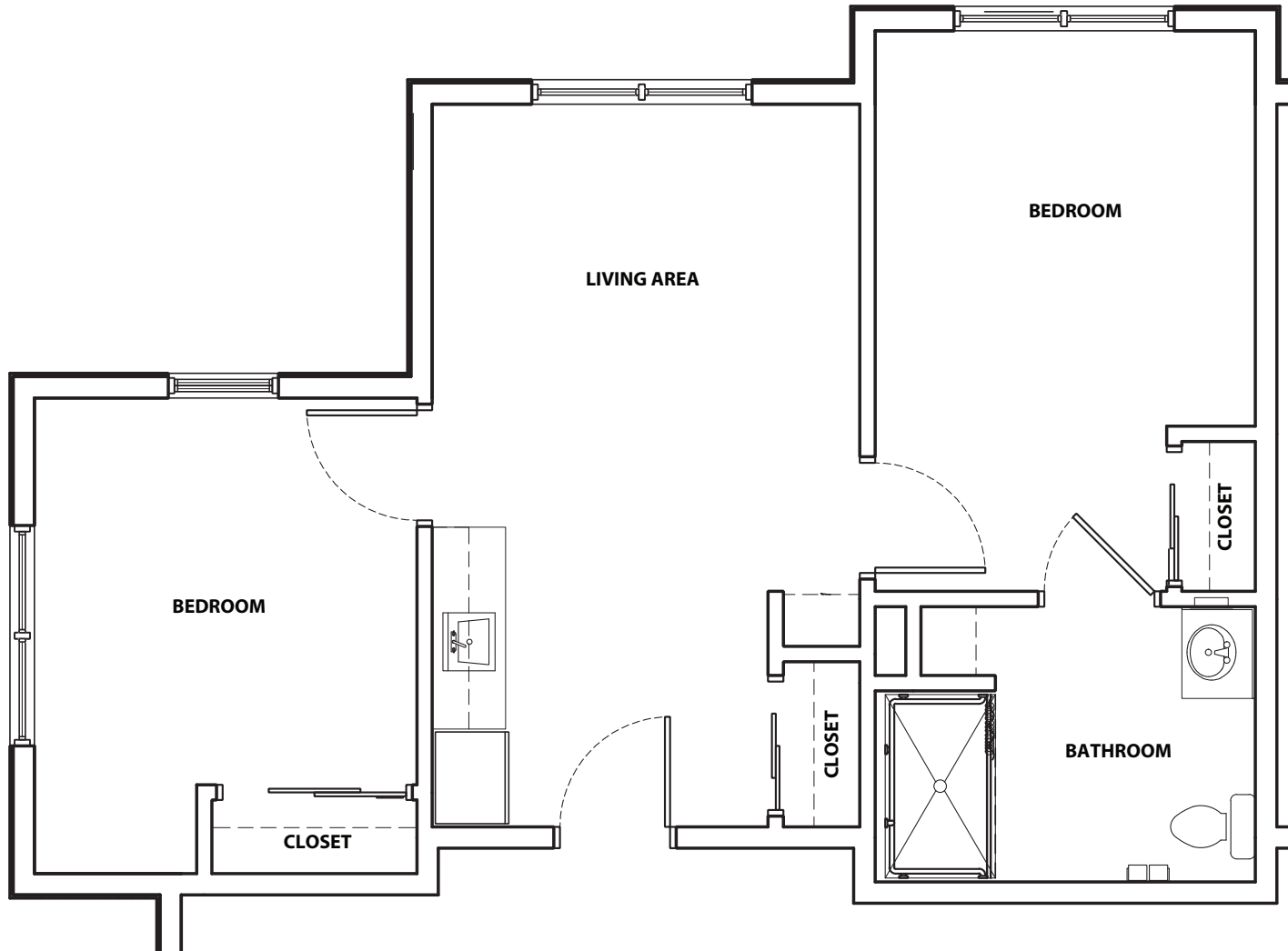


Private Two Bedroom, Full Bath



MESA VALLEY ESTATES

Assisted Living and Memory Care

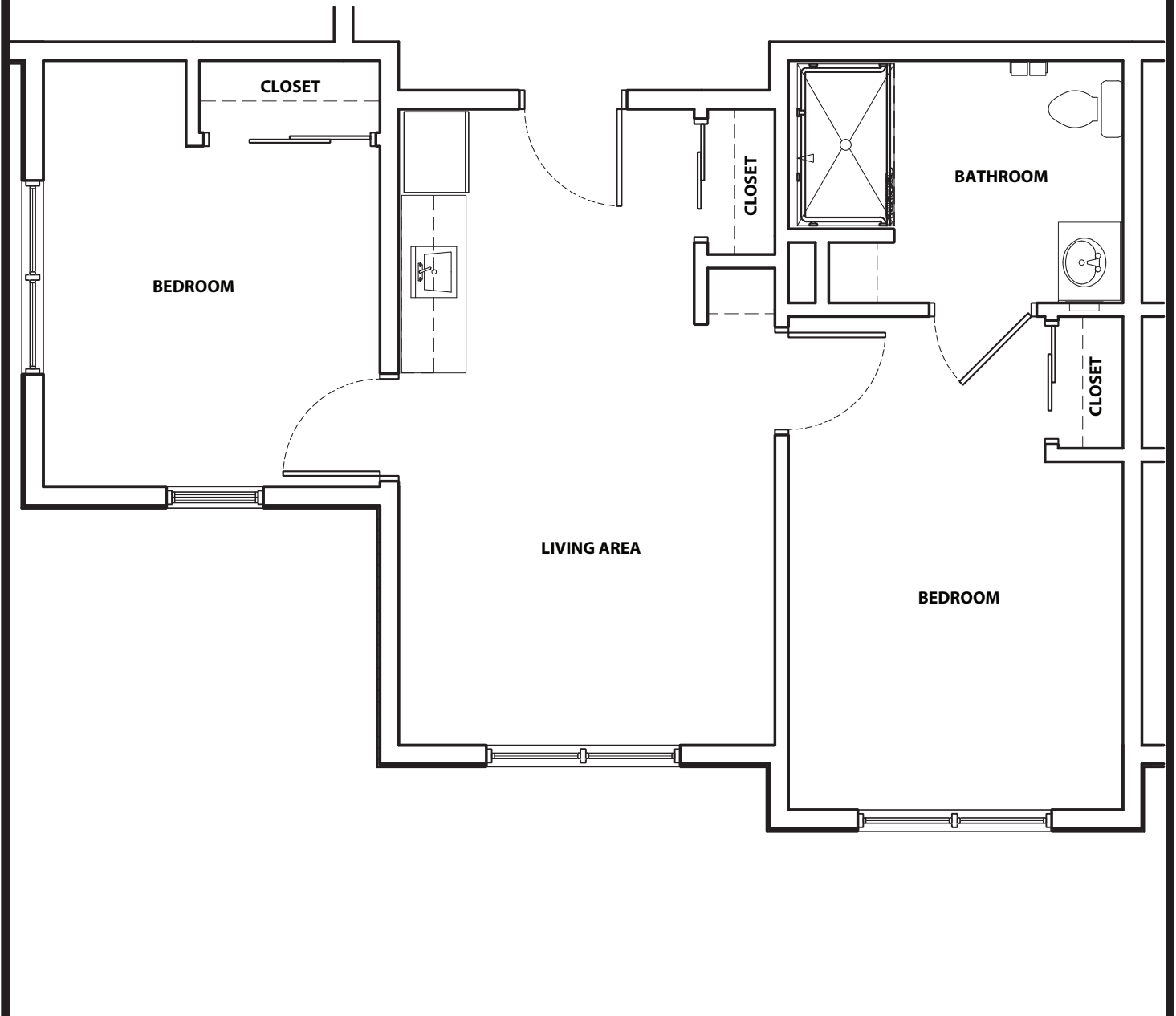
Caring People | Serving People | Improving Lives

1328 Bertha Howe Ave | Mesquite, NV 89034

Phone: (702) 344-5050



Private Two Bedroom, Full Bath



MESA VALLEY ESTATES

Assisted Living and Memory Care

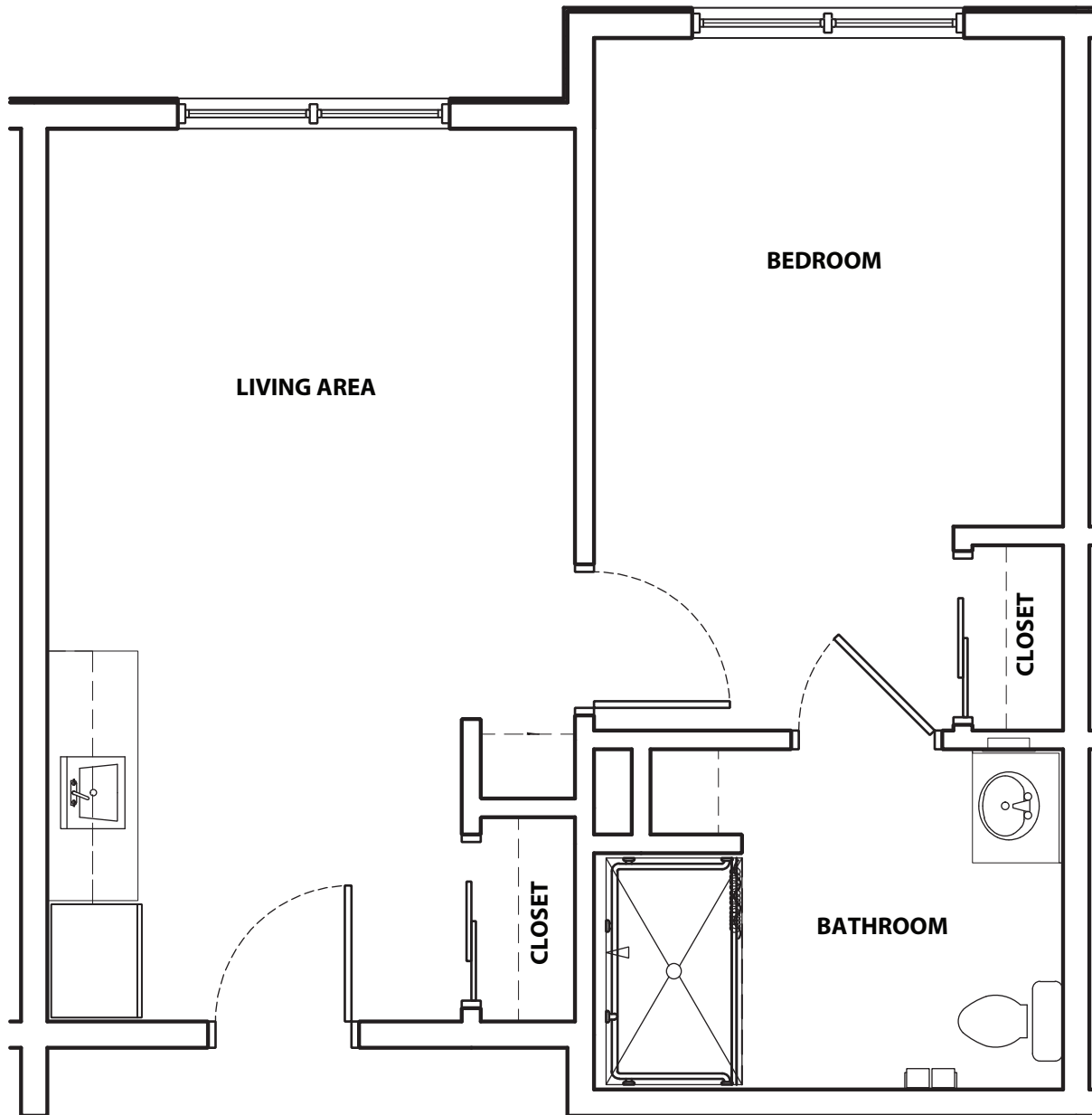
Caring People | Serving People | Improving Lives

1328 Bertha Howe Ave | Mesquite, NV 89034

Phone: (702) 344-5050



Private One Bedroom, Full Bath



MESA VALLEY ESTATES

Assisted Living and Memory Care

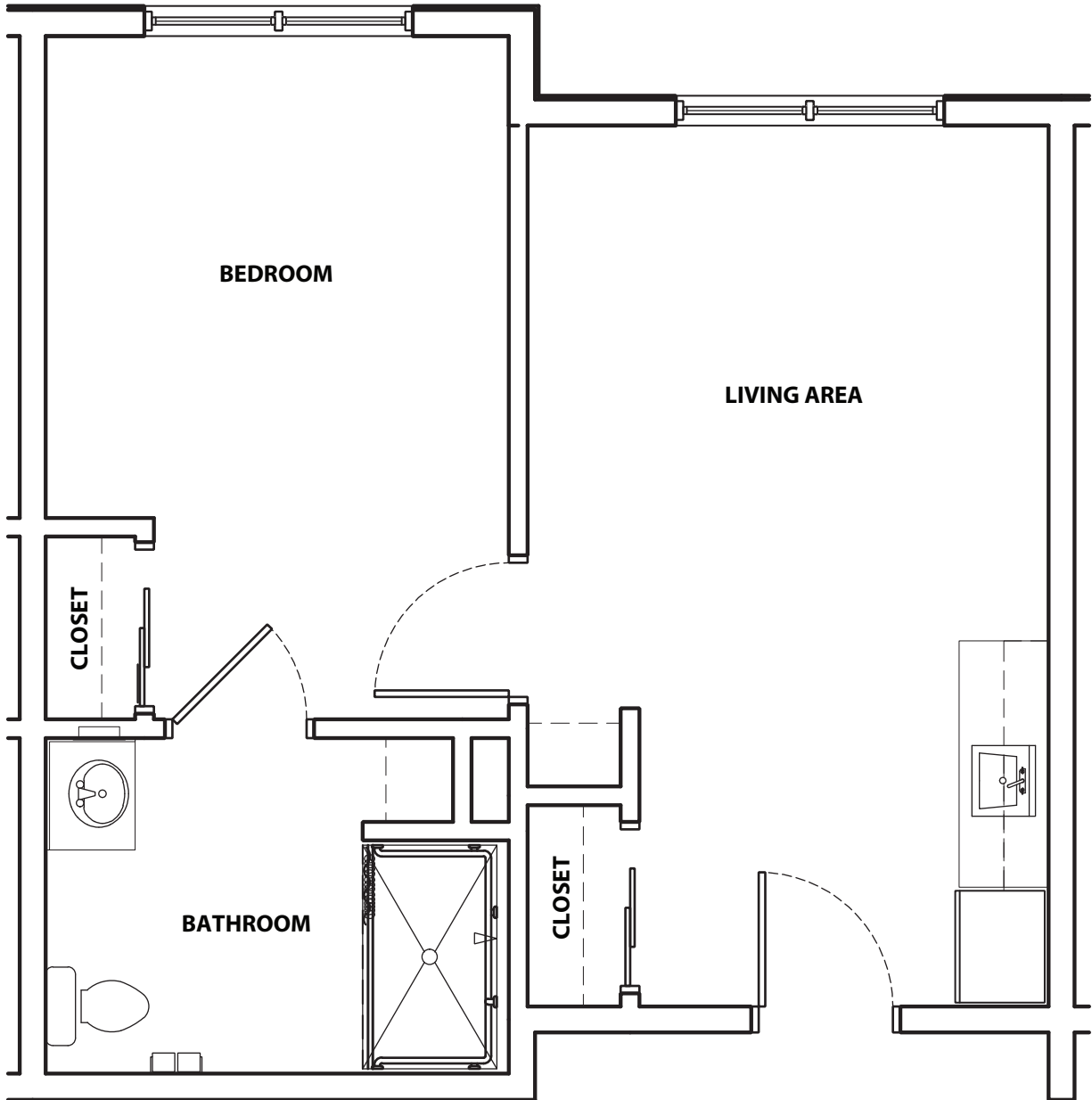
Caring People | Serving People | Improving Lives

1328 Bertha Howe Ave | Mesquite, NV 89034

Phone: (702) 344-5050



Private One Bedroom, Full Bath



MESA VALLEY ESTATES

Assisted Living and Memory Care

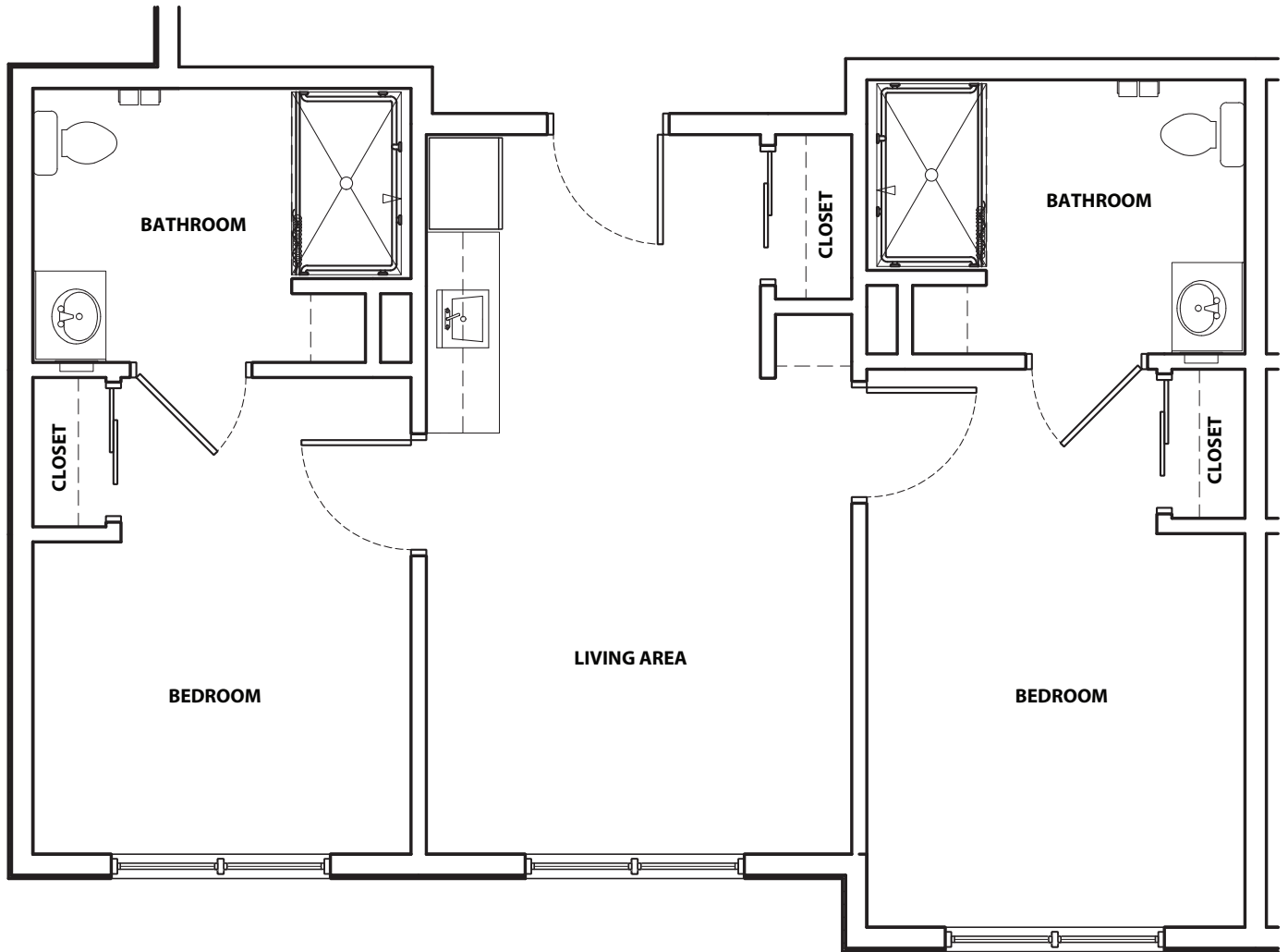
Caring People | Serving People | Improving Lives

1328 Bertha Howe Ave | Mesquite, NV 89034

Phone: (702) 344-5050



Private Two Bedroom, Two Full Bath



MESA VALLEY ESTATES

Assisted Living and Memory Care

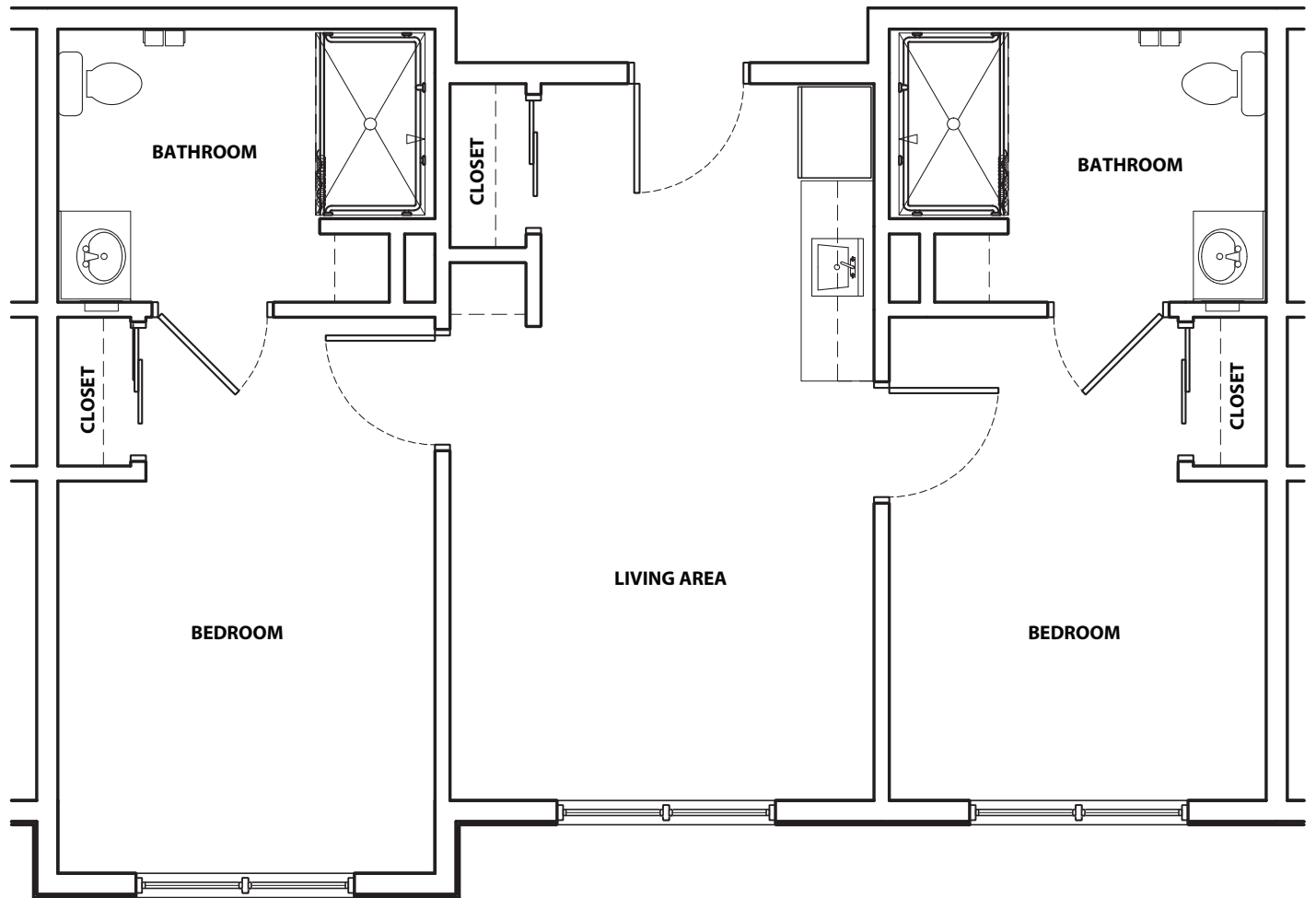
Caring People | Serving People | Improving Lives

1328 Bertha Howe Ave | Mesquite, NV 89034

Phone: (702) 344-5050



Private Two Bedroom, Two Full Bath



MESA VALLEY ESTATES

Assisted Living and Memory Care

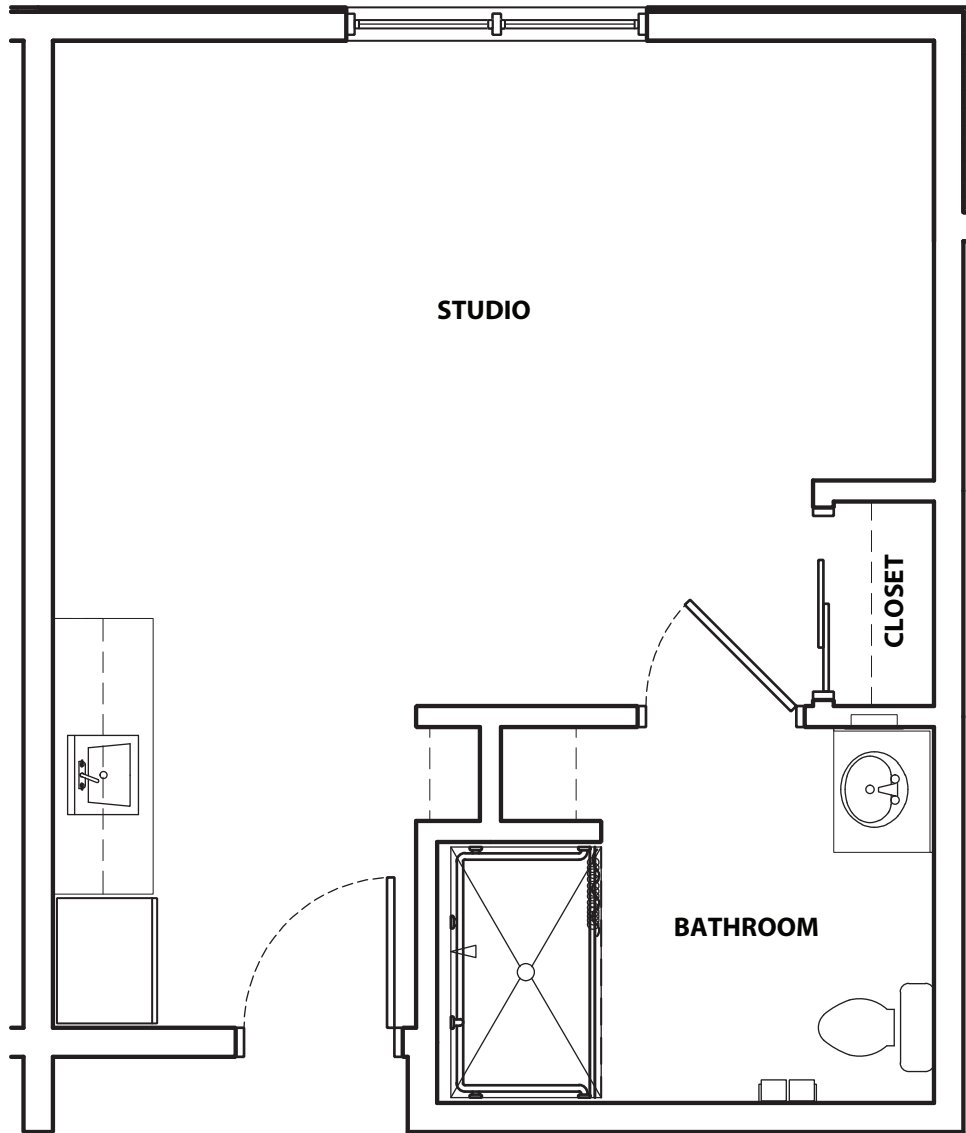
Caring People | Serving People | Improving Lives

1328 Bertha Howe Ave | Mesquite, NV 89034

Phone: (702) 344-5050



Private Studio, Full Bath



MESA VALLEY ESTATES

Assisted Living and Memory Care

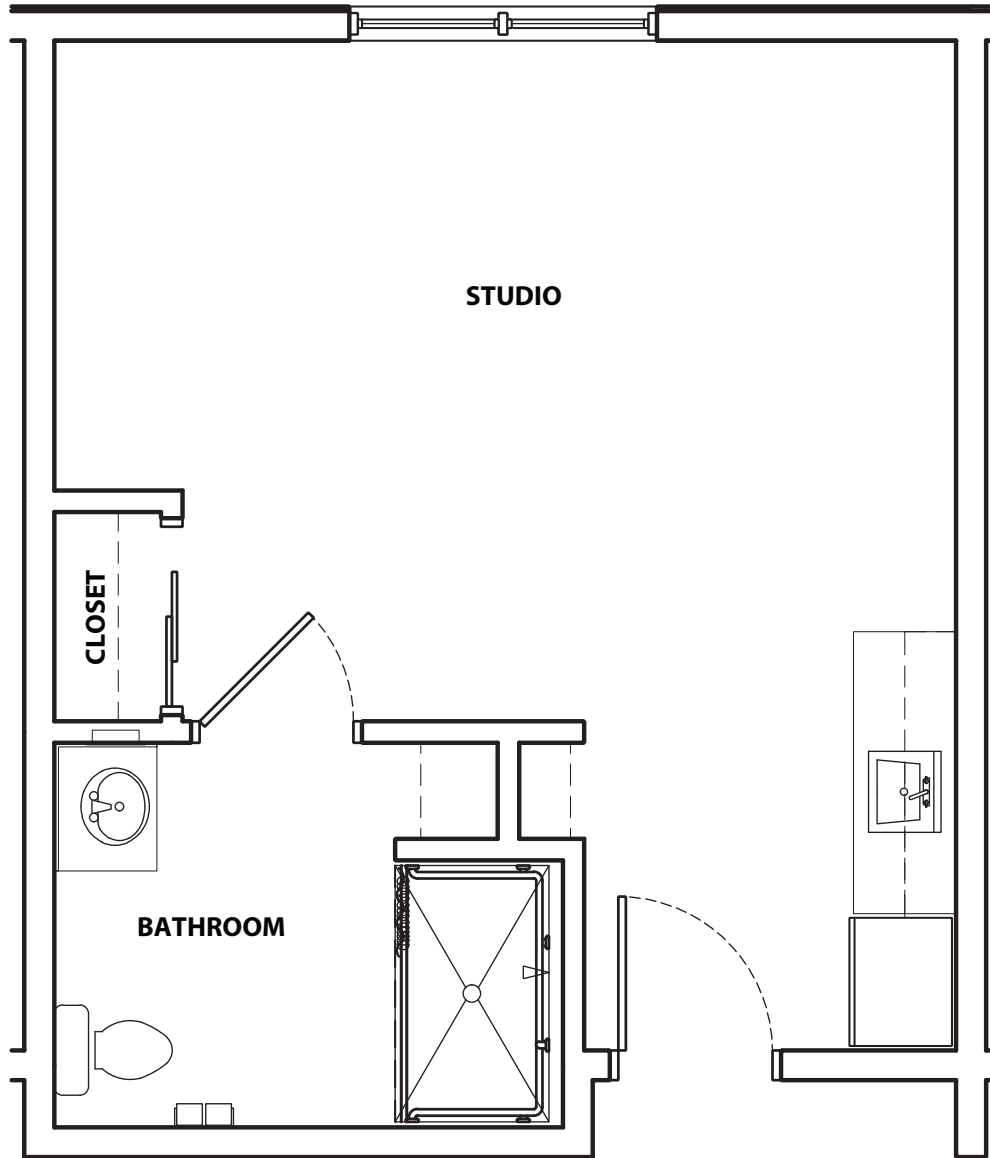
Caring People | Serving People | Improving Lives

1328 Bertha Howe Ave | Mesquite, NV 89034

Phone: (702) 344-5050



Private Studio, Full Bath



MESA VALLEY ESTATES

Assisted Living and Memory Care

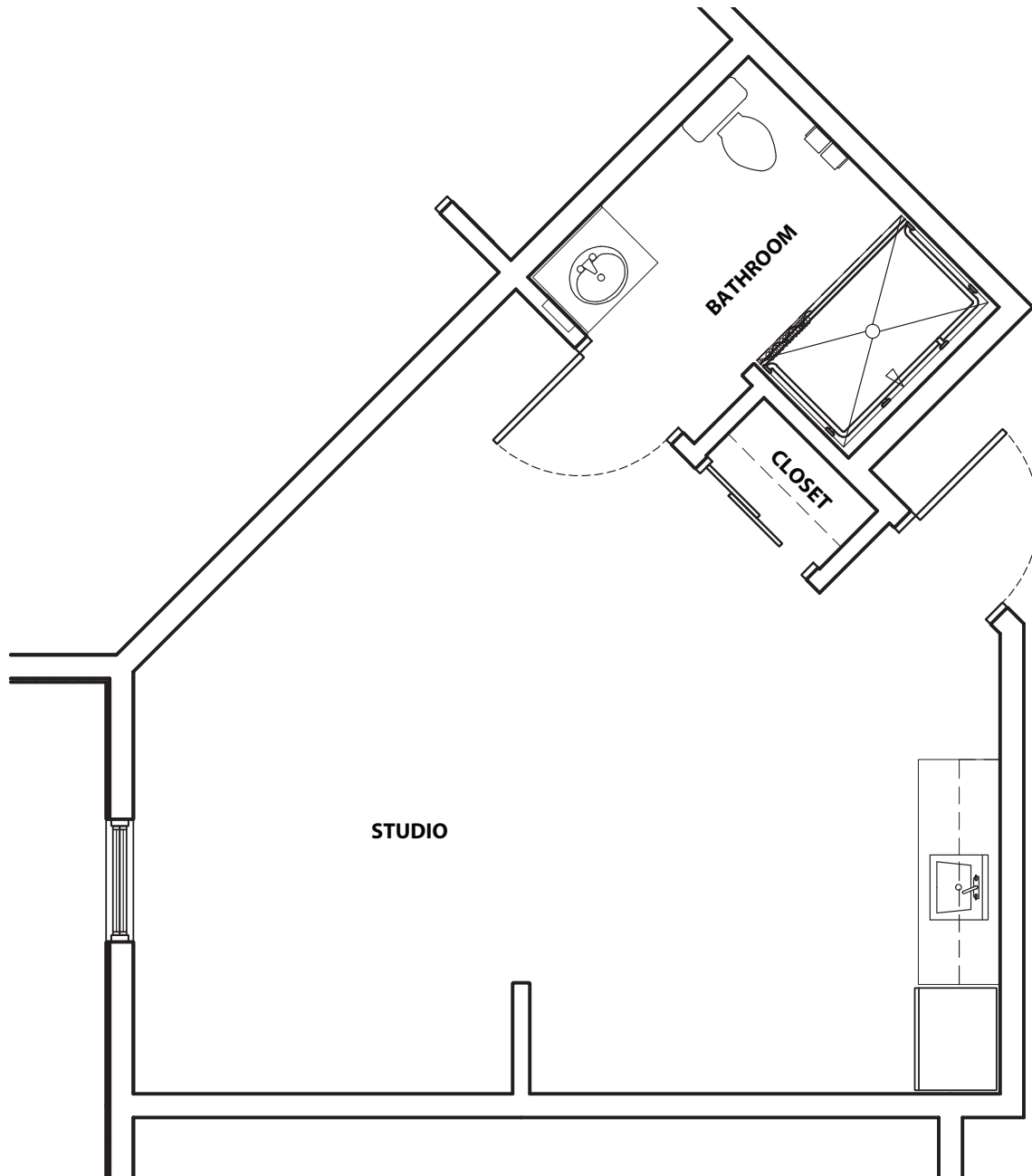
Caring People | Serving People | Improving Lives

1328 Bertha Howe Ave | Mesquite, NV 89034

Phone: (702) 344-5050



Corner Private Studio, Full Bath



MESA VALLEY ESTATES

Assisted Living and Memory Care

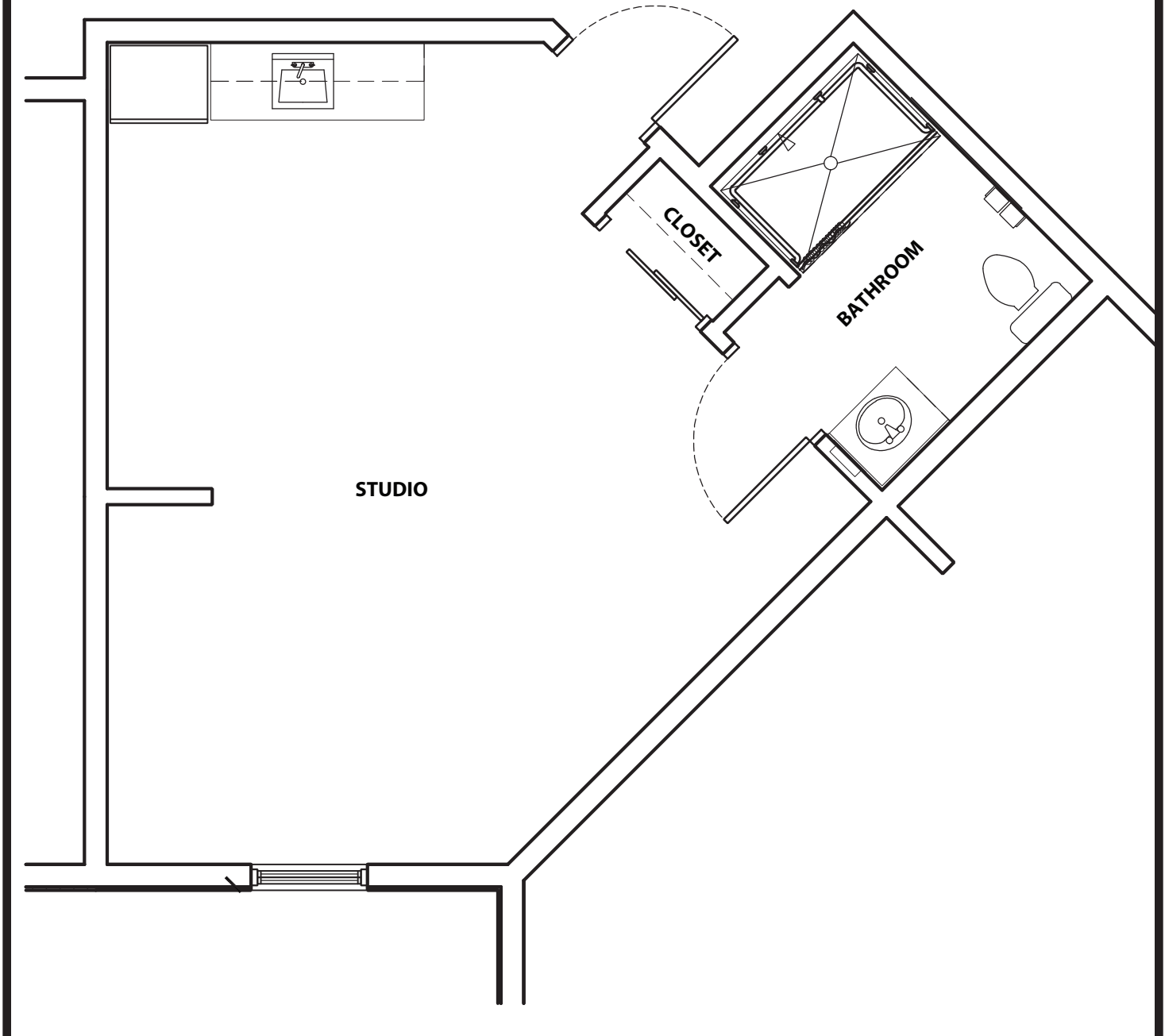
Caring People | Serving People | Improving Lives

1328 Bertha Howe Ave | Mesquite, NV 89034

Phone: (702) 344-5050



Corner Private Studio, Full Bath



MESA VALLEY ESTATES

Assisted Living and Memory Care

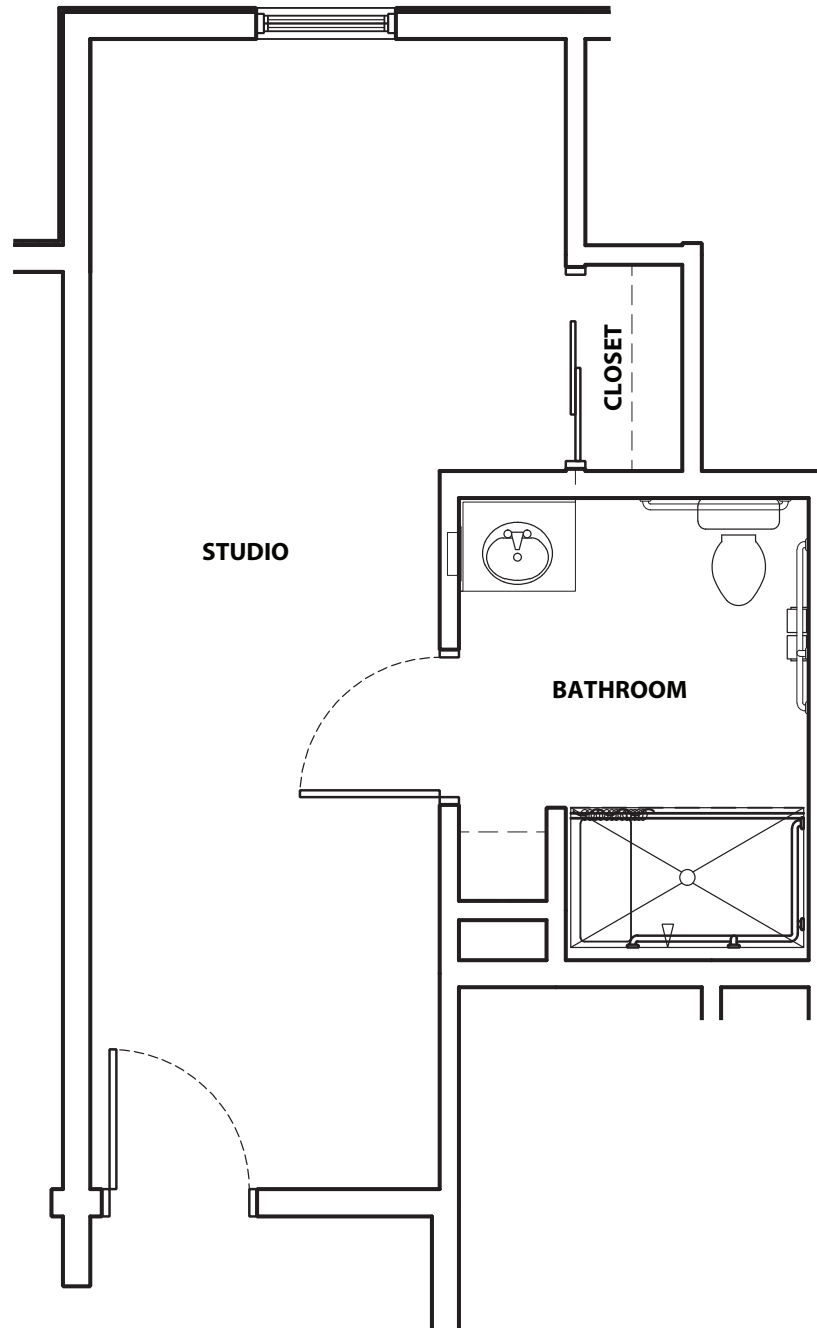
Caring People | Serving People | Improving Lives

1328 Bertha Howe Ave | Mesquite, NV 89034

Phone: (702) 344-5050



Private Studio, Full Bath



MESA VALLEY ESTATES

Assisted Living and Memory Care

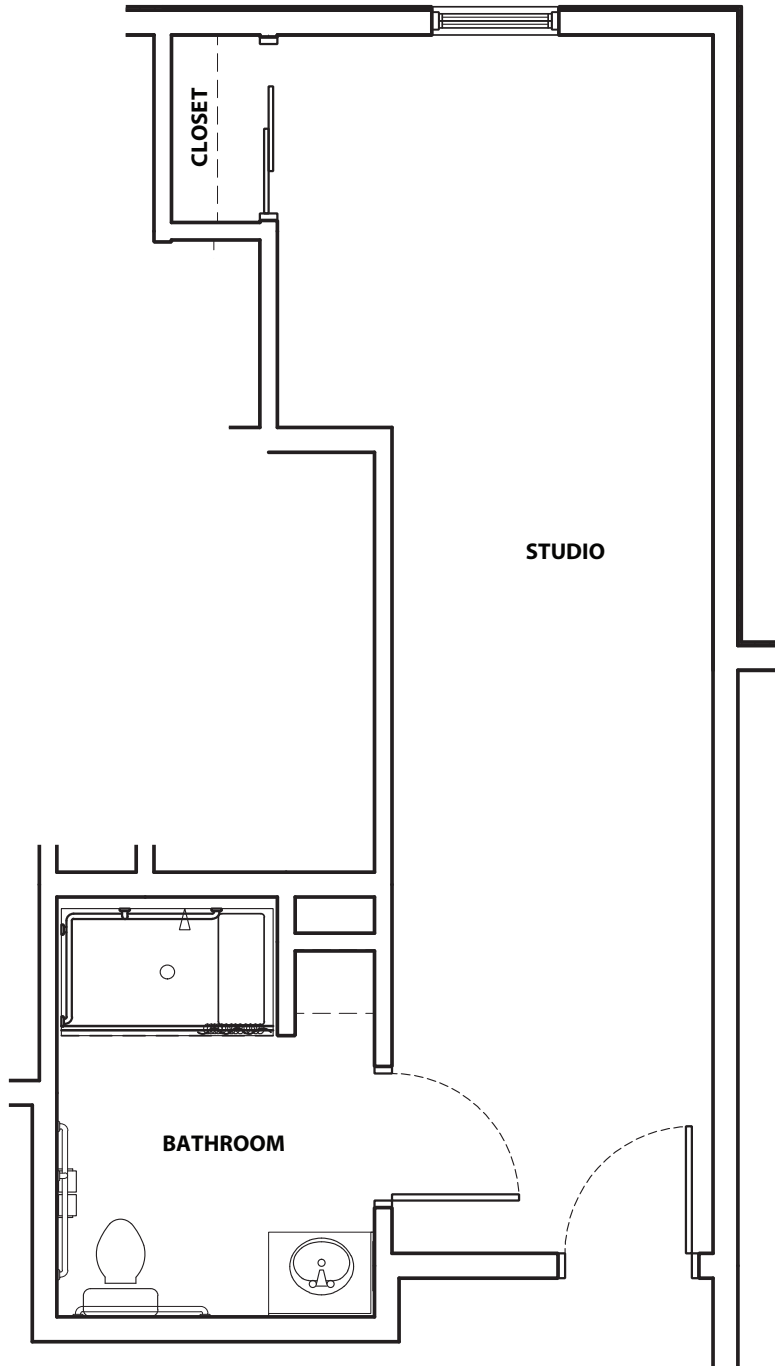
Caring People | Serving People | Improving Lives

1328 Bertha Howe Ave | Mesquite, NV 89034

Phone: (702) 344-5050



Private Studio, Full Bath



MESA VALLEY ESTATES

Assisted Living and Memory Care

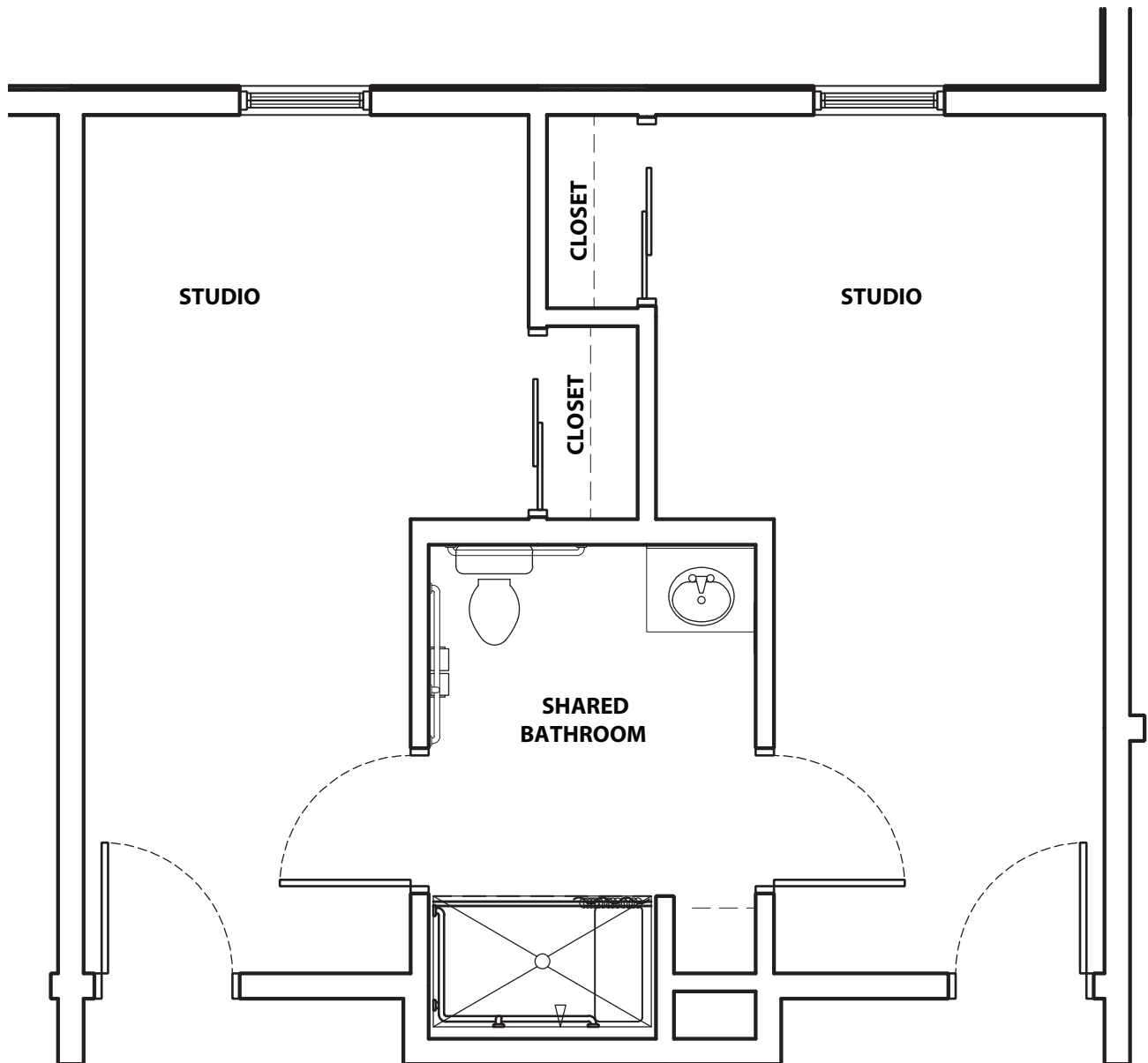
Caring People | Serving People | Improving Lives

1328 Bertha Howe Ave | Mesquite, NV 89034

Phone: (702) 344-5050



Shared Studio Apartment with Shared Bath



MESA VALLEY ESTATES

Assisted Living and Memory Care

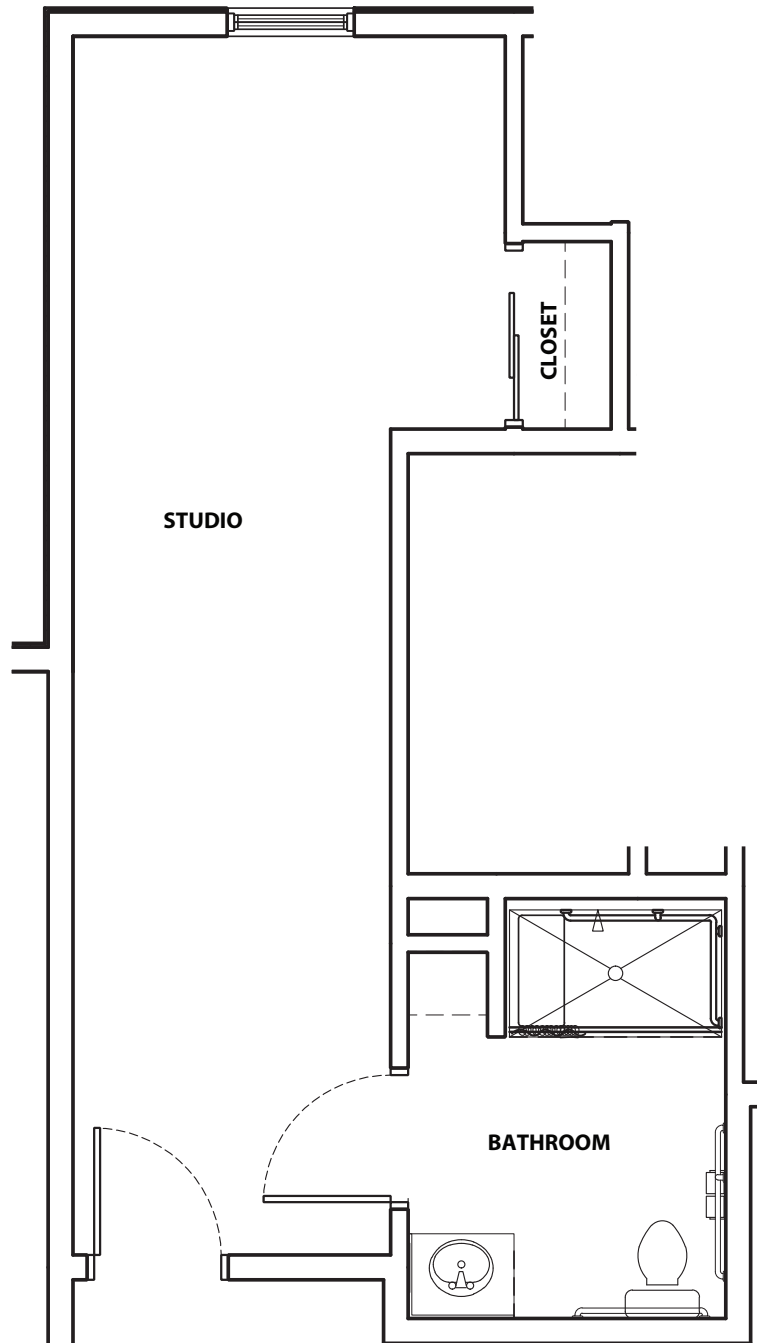
Caring People | Serving People | Improving Lives

1328 Bertha Howe Ave | Mesquite, NV 89034

Phone: (702) 344-5050



Private Studio Apartment, Full Bath



MESA VALLEY ESTATES

Assisted Living and Memory Care

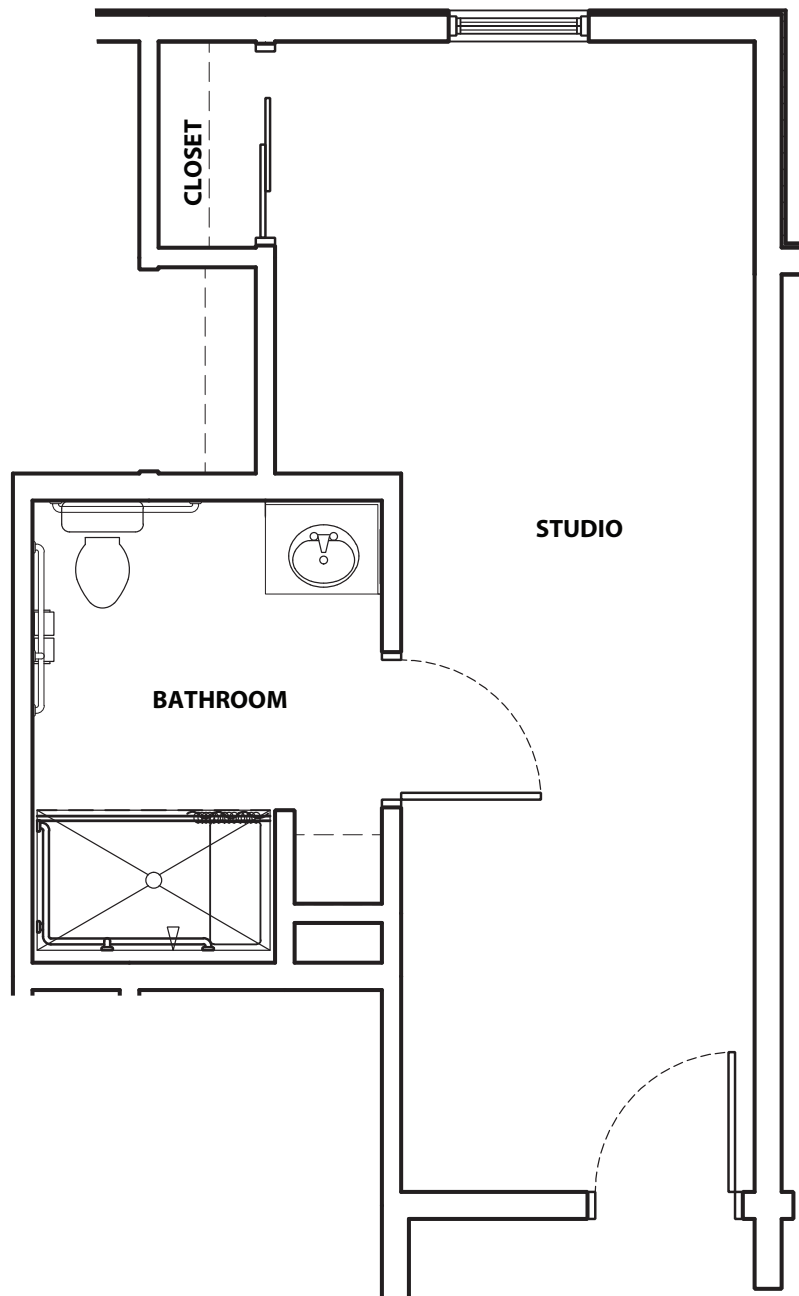
Caring People | Serving People | Improving Lives

1328 Bertha Howe Ave | Mesquite, NV 89034

Phone: (702) 344-5050



Private Studio Apartment, Full Bath



MESA VALLEY ESTATES

Assisted Living and Memory Care

Caring People | Serving People | Improving Lives

1328 Bertha Howe Ave | Mesquite, NV 89034

Phone: (702) 344-5050

