



*Caring people,  
Serving people,*

*Improving Lives.*



MESA VALLEY ESTATES

Assisted Living and Memory Care

Caring People | Serving People | Improving Lives

*Assisted Living & Memory Care  
with a Unique Mission*

## Our Residents Define Our Mission

At Mesa Valley Estates, our senior living community provides assisted living and memory care, recognizing that creating a home for your loved one goes beyond services such as meals or transportation. Our homelike atmosphere is built on six words that define our mission:

*Caring People—Serving  
People—Improving Lives.*

We fulfill our mission in the small things, such as cooking a meal...and the big things, such as helping your loved one realize a cherished dream.

No matter what we do, we're here to serve our residents and help them begin the next great chapter of their lives.



## How We Serve Your Loved One

At Mesa Valley Estates, your loved one...

- Will have housekeeping or laundry provided by caring team members.
- Will enjoy three well-balanced meals from our primary or alternative menu.
- Will gain assistance with scheduling transportation or a ride in our community van.

And while we offer even more services, that's not what makes us special.

At Mesa Valley Estates, we discover what's important to your loved one. Our goal is to deliver care in a way that shows our commitment to serving our residents and improving their lives.



*Not only are the accommodations warm and inviting—four-legged best friends are welcome too!*

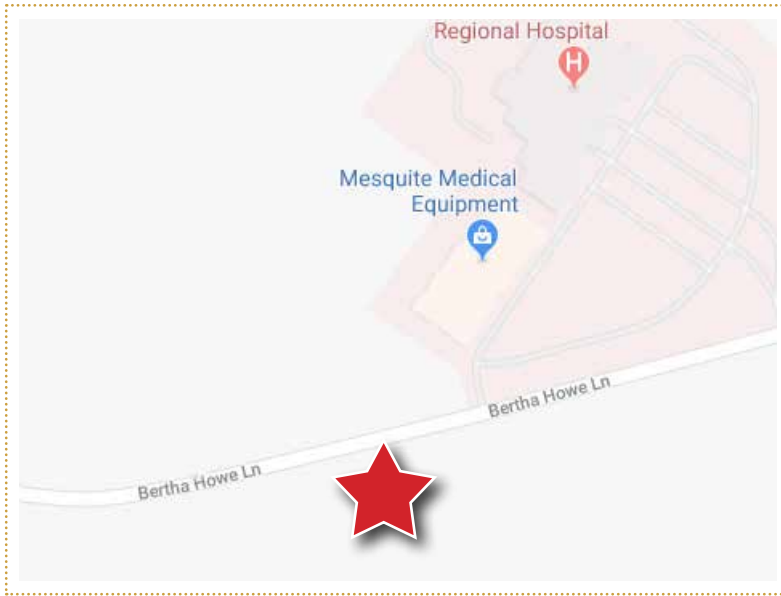
## Fostering Personal Choices

Mesa Valley Estates improves your loved one's life by seeking to understand your family member—what they like, dislike, and dream about. We then use this knowledge to offer as many positive personal choices as possible.

Not only do we personalize our care, but we also help your loved one...

- Visit our beauty and barber salon.
- Enjoy activities organized by a dedicated Director of Life Enrichment.
- Keep active with exercise programs.
- Request help with our emergency call system.

Visit Mesa Valley Estates and see how we put our mission into action. We're ready to answer your questions and show how your loved one can begin the next great chapter of his or her life.



**MESA VALLEY ESTATES**

Assisted Living and Memory Care

Caring People | Serving People | Improving Lives

*Find Us Here*

1328 Bertha Howe Ave. | Mesquite, NV 89034

*Let's Talk*

702-344-5050

*Visit Us Online*

[www.MesaValleyEstates.net](http://www.MesaValleyEstates.net)

# Monthly Rates

<i>Assisted Living</i>	<b>Founders Rate</b>	<b>Opening Rates</b>
Studio Standard	\$2,995.00*	\$3,095.00
Studio Deluxe	\$3,095.00*	\$3,195.00
One-Bedroom Apartment	\$3,295.00*	\$3,395.00
Two-Bedroom	\$4,095.00*	\$4,195.00
Two-Bedroom/Two-Bath	\$4,095.00*	\$4,195.00

## *Memory Care*

Semi-Private Apartment	\$4,195.00*	\$4,295.00
Private Apartment	\$4,795.00*	\$4,895.00

## *Care and Service*

Serving your loved one will look different for each stage of life. At Mesa Valley Estates, we support your family member's changing needs with different levels of care.

Independent	No Fee	No Fee
Level One	\$300.00	\$300.00
Level Two	\$600.00	\$600.00
Level Three	\$900.00	\$900.00
Level Four	\$1,200.00	\$1,200.00

## *Joining Our Community*

A few things you'll want to know about joining our community...

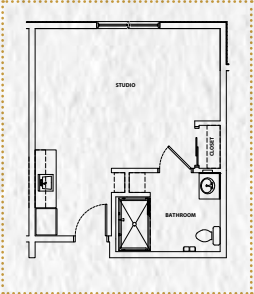
- When your loved one moves in, they'll pay a one-time, nonrefundable community fee of \$750\* or \$1,500.
- If your loved one wants to share an apartment with their spouse, there's a fee of \$750.
- If your loved one wants to bring along their furry friend, we welcome approved pets for a one-time fee of \$750.

*\*Founders rate applies only if deposit is received by June 15th, 2019*

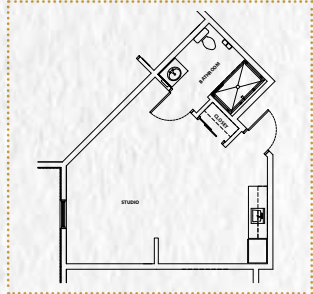
# Assisted Living Apartments

Discuss with your loved one which apartment would make them feel most at home. Our community offers several floor plans to choose from:

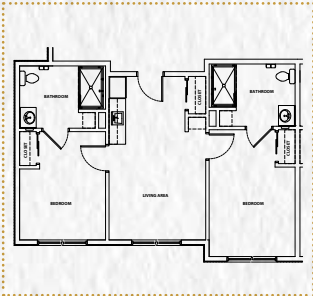
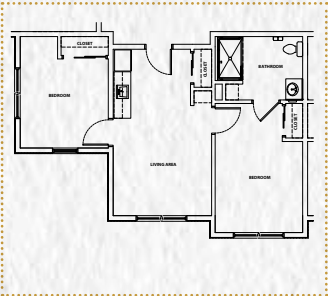
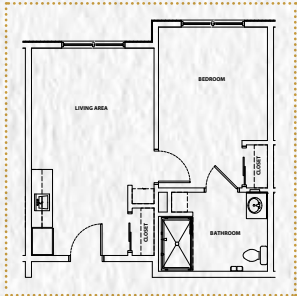
*Studio Standard*



*Studio Deluxe*



*One-Bedroom, One-Bath Two-Bedroom, One-Bath Two-Bedroom, Two-Bath*



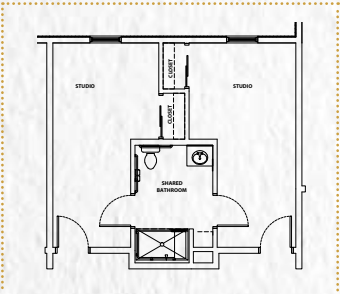
# Memory Care Apartments

Evaluate your loved one's needs, and select the apartment that suits them best. Here are the floor plans we offer for our memory care residents:

*Private Studio*



*Semi-Private Studio*



# Memory Care

If your loved one suffers from a form of dementia, our caring team members and targeted services will provide the memory care support they need.

## ***Caring Team Members Who Serve Your Loved One***

At Mesa Valley Estates, you can rest assured, knowing your loved one is enjoying care from...

- Trained team members available 24/7 who frequently check on your loved one.
- A medical support team who can address your loved one's medical needs.
- A Director of Life Enrichment who plans activities that foster cognitive health.
- Team members who can help with personal care needs, dressing, bathing, mobility, and more.
- Qualified team members who can provide critical medication management.

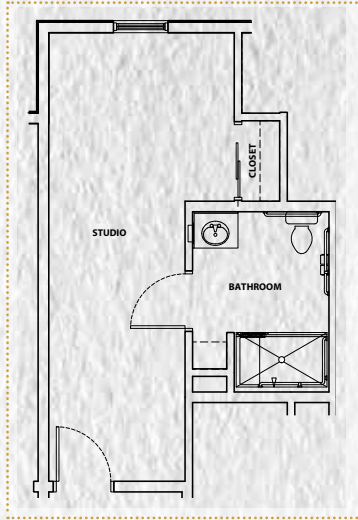
## ***Services and Amenities That Improve Your Loved One's Life***

From ensuring proper nutrition to keeping rooms clean and tidy, we ensure your loved one receives...

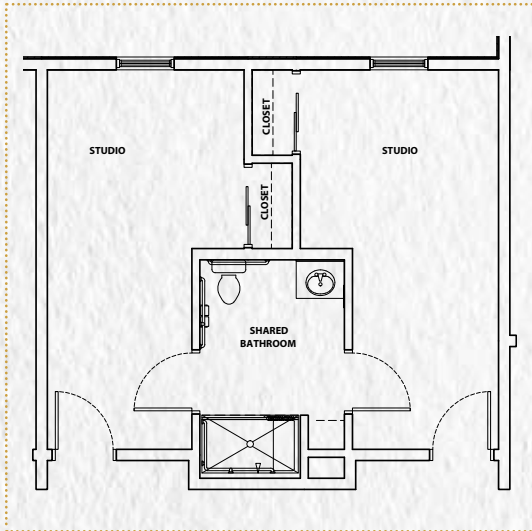
- Nutritious dining options that provide your loved one with positive personal choices.
- Transportation for doctor visits and medical appointments.
- Care that ensures your family member enjoys a clean personal environment as well as freshly washed clothes and linen.
- Opportunities for social outings in the local community.
- Safety, thanks to a team that monitors residents' well-being.
- Beautifully maintained grounds with a secured courtyard and walking paths.

Supporting your family member with memory care helps us fulfill our mission: ***Caring People, Serving People, Improving Lives.***

*Private Studio*



*Semi-Private Studio*





# Assisted Living

If your loved one needs support to remain independent, Mesa Valley Estates will help them continue to enjoy making positive personal choices.

## *Caring Team Members Who Serve Your Loved One*

Enjoy peace of mind, knowing your loved one has the support they need from...

- Trained team members available 24/7 to assist your loved one and monitor safety.
- A Director of Life Enrichment who involves residents in games, social outings, and community events.
- Qualified team members who can provide medication management.



Whether we're providing exercise programs or well-balanced meals, our assisted living community exists to fulfill our mission: *Caring People, Serving People, Improving Lives.*

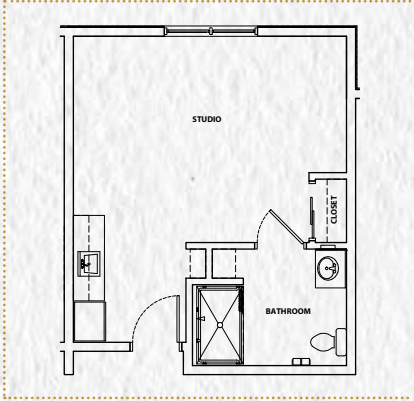
## *Services and Amenities That Improve Your Loved One's Life*

While your loved one may be aging, our assisted living options can ensure they enjoy...

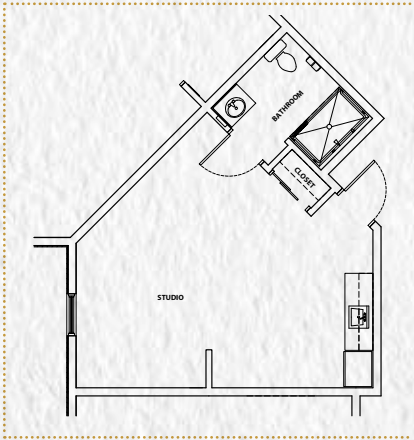
- An apartment with a full bathroom and kitchenette.
- Nutritious meals as well as outings into the broader community to sample local foods.
- Scheduled trips to the grocery store or nearby points of interest.
- Services that ensure your loved one has a tidy apartment and fresh clothes and linen.
- Support for bathing, dressing, and personal care—whatever your loved one needs to navigate life's changes.
- Scheduled exercise activities and a chance to enjoy nature, thanks to safe walking paths and a community courtyard.

# Assisted Living Floor Plans

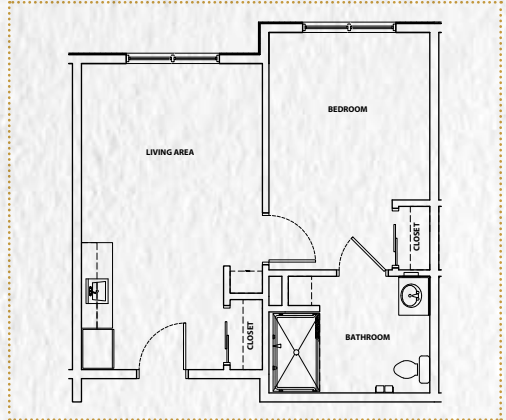
## *Studio Standard*



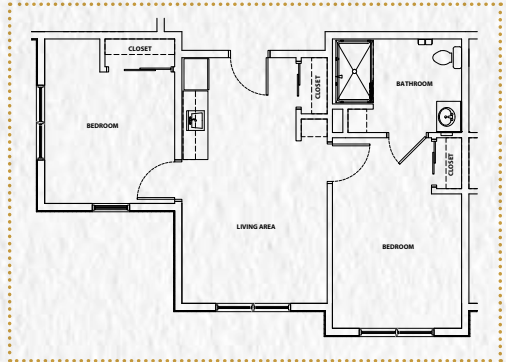
## *Studio Deluxe*



## *One-Bedroom, One-Bath*



## *Two-Bedroom, One-Bath*



## *Two-Bedroom, Two-Bath*

